


The Maplewood

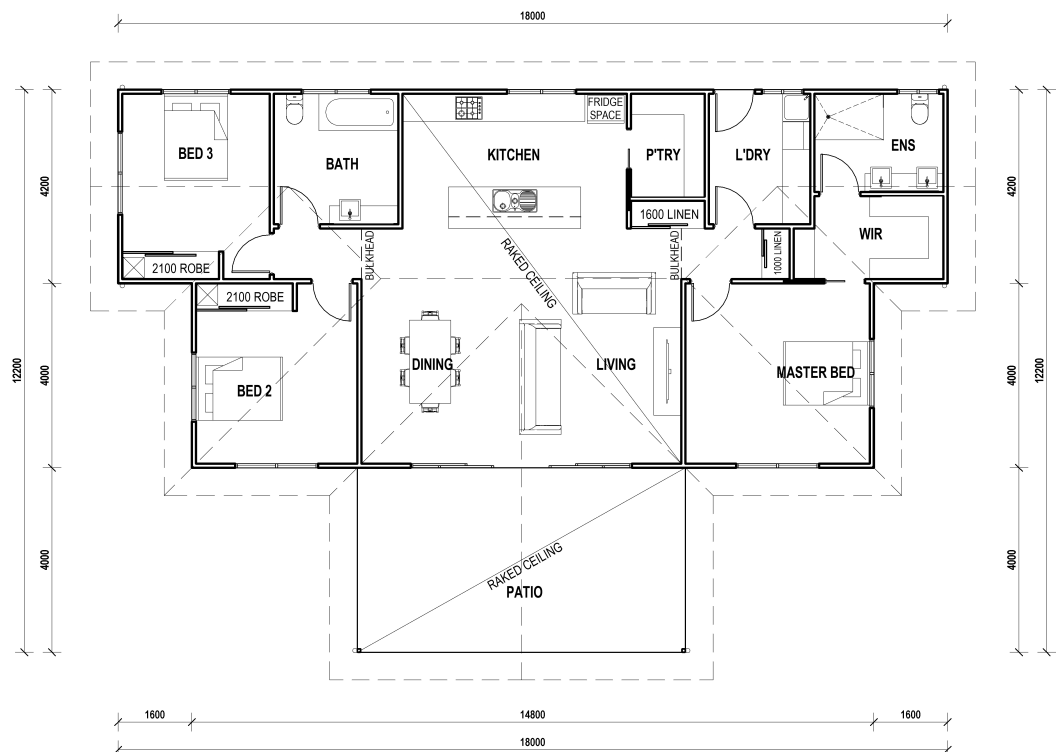


QLD KIT HOMES

Affordability Without Compromise

The Maplewood is a three bed, two bath home featuring a 3m wide patio at the front, with an open plan living area. This home measures 18x12.2m plus 600mm overhangs to all sides of the building. Making this a perfect family home.

3 
2 
163 m² 



34/5 FACULTY CLOSE, SMITHFIELD | PH: (07) 4038 3900 | FAX: (07) 4027 9613
www.qldkithomes.com.au | QBCC: 1117525