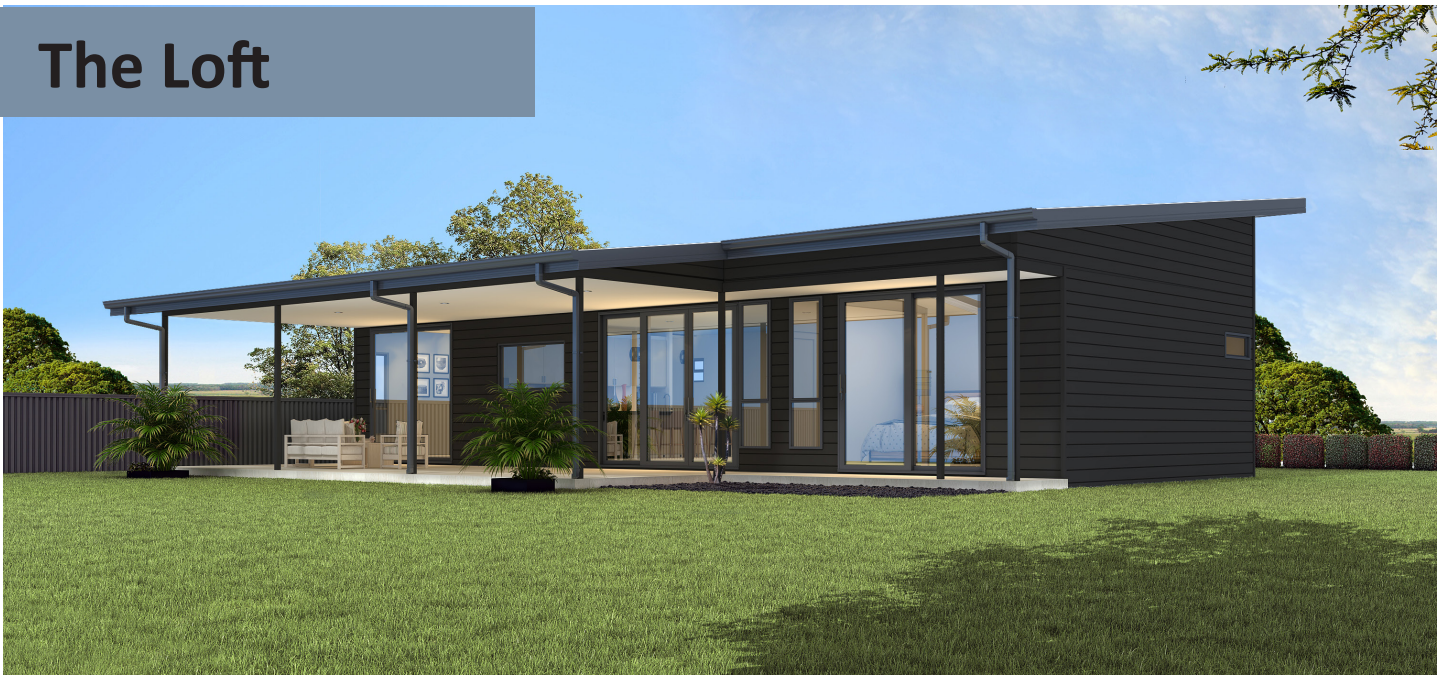



The Loft





QLD KIT HOMES

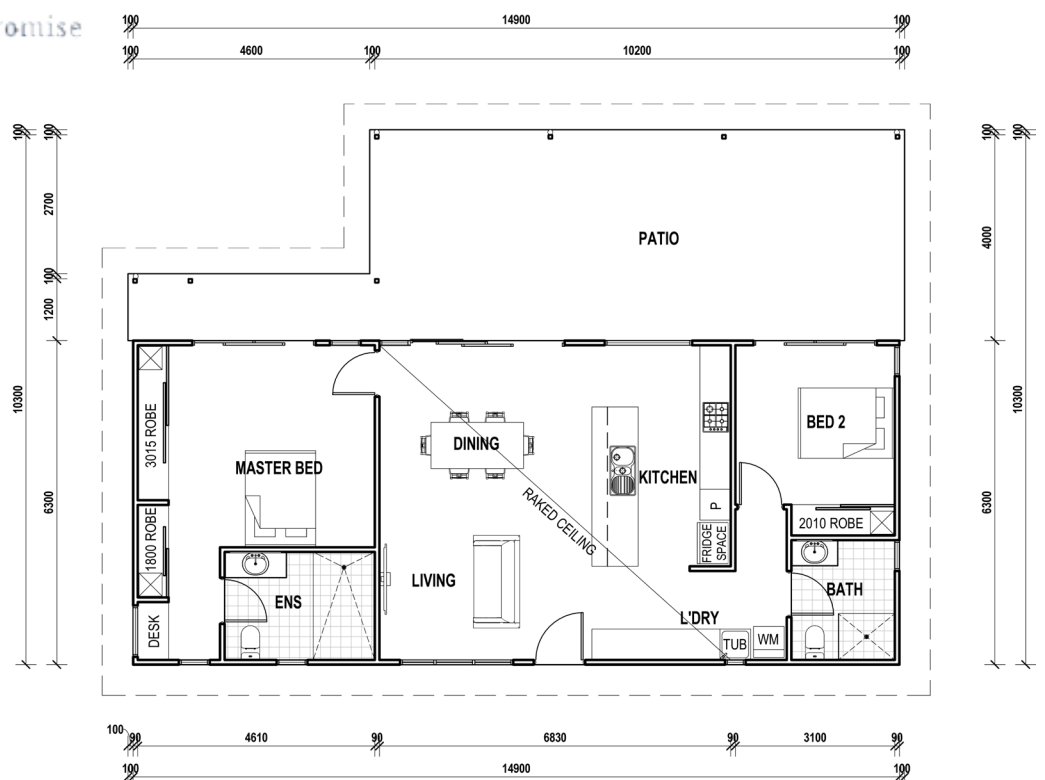
Affordability Without Compromise

Introducing "The Loft" – a charming 2-bedroom, 2-bathroom residence that defines modern living. This cozy abode, spanning 14.9x10.3 meters, offers a perfect balance of space and functionality. The highlight of "The Loft" is its expansive outdoor entertaining area, inviting you to create memorable moments under the open sky. Whether you're seeking relaxation or hosting gatherings, this space provides the ideal backdrop. Experience the charm and comfort of "The Loft," where every day feels like a special occasion.

2 

2 

181 m² 



34/5 FACULTY CLOSE, SMITHFIELD | PH: (07) 4038 3900 | FAX: (07) 4027 9613
www.qldkithomes.com.au | QBCC: 1117525