

Come Home to Quality!



Address: Shop 34,
5 Faculty Close,
Smithfield QLD 4878
Email: luke@qldkithomes.com.au
Web: qldkithomes.com.au
Phone: (07) 4038 3900
Lic No: QBCC-1201601

Kitchen



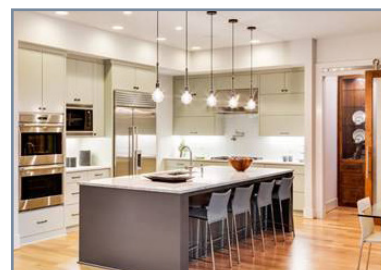
Base Mk2 Sink Mixer

- 4 Star WELS Rating
- 6.5 Litres per minute
- Durable chrome finish resists scratching and tarnishing

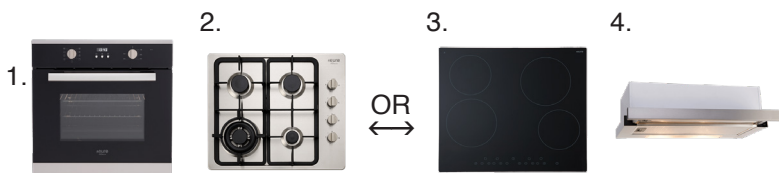


Posh Solus MkII Sink

- Left hand 1 & 3/4 bowl with drainer
- Generous drainage tray
- Sound deadening pads

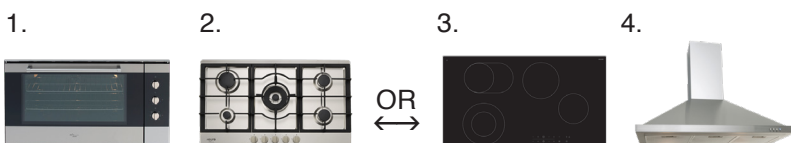


1 & 2 Bedroom Homes (Budget Package)



1. 60cm Electric In Built Oven, 9 multi-function 70liter
 2. 60cm Gas Cooktop + Wok **OR**
 3. 60cm Ceramic Cooktop
 4. 60cm Slide Out Range Hood (Recycled)
- Euro Appliances 5 years warranty

3 & 4 Bedroom Homes (Family Package)



1. 90cm Electric In Built Oven, 7 Functions, Fan Forced
 2. 90cm Gas Cooktop with 4 Burners and 1 Wok Burner **OR**
 3. 90cm Ceramic Touch Electric Cooktop
 4. 90cm S/Steel Canopy Range Hood
- Euro Appliances 5 Year warranty

Premium Package



1. 90cm Dual Freestanding Gas Oven
 2. 90cm Straight Touch Canopy
 3. 60cm Freestanding Dishwasher
- Euro Appliances 5 Year warranty

Come Home to Quality!



Address: Shop 34,
5 Faculty Close,
Smithfield QLD 4878
Email: luke@qldkithomes.com.au
Web: qldkithomes.com.au
Phone: (07) 4038 3900
Lic No: QBCC-1201601

Bathroom



1500mm Wall Mounted Vanity (White or Timber Look)

- Double Bowl
- PVC Water Proof
- Soft Close Doors/Draws



900mm Wall Mounted Vanity (White or Timber look)

- PVC Water Proof
- Soft Close Doors/Draws



Base Mk2 Basin Mixer

- Functional & classic basin mixer
- 4 Star WELS rating
- 6.5 Litres per minute



Base Mk2 Shower Mixer

- Functional & classic design
- Suits a variety of bathrooms
- Durable Chrome finish



Shower Screen

- Glass shower screen with chrome frame
- Adjustable design
- Reversible for left or right hand entry



Base Mk2 Shower Mixer

- Overhead with adjustable arm
- 3 Star WELS Rating
- 9 Litres per minute



Posh Dominique CC Toilet Suite

- Vitreous china close coupled suite
- Soft-close seat
- 4 Star WELS rating
- 3 - 4.5 Litres per flush

Stylish & Contemporary Bathroom Accessories





Fixtures & Fittings



Posh Kensington 45Ltr Trough & Cabinet

- Powdercoated steel cabinet
- Reversible door
- Adjustable feet for stability & child safety door catch
- Laundry plumbing & tap fittings



Ceiling Fans

- 1200mm reversible 4 blade white ceiling fan
- Reverse cycle motor for summer & winter
- Quiet & energy efficient operation with 3-speed control

- Recessed downlights throughout



- Double power points
- TV & phone outlet

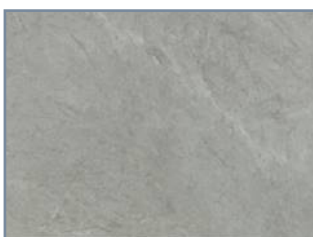
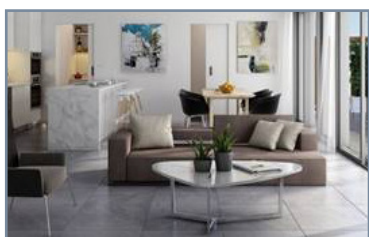


Come Home to Quality!

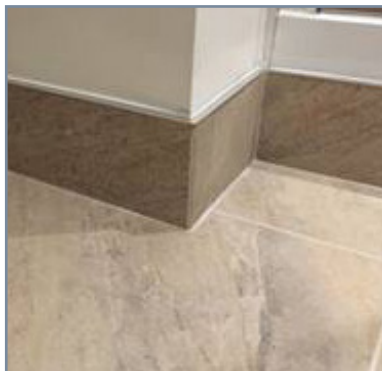


Address: Shop 34,
5 Faculty Close,
Smithfield QLD 4878
Email: luke@qldkithomes.com.au
Web: qldkithomes.com.au
Phone: (07) 4038 3900
Lic No: QBCC-1201601

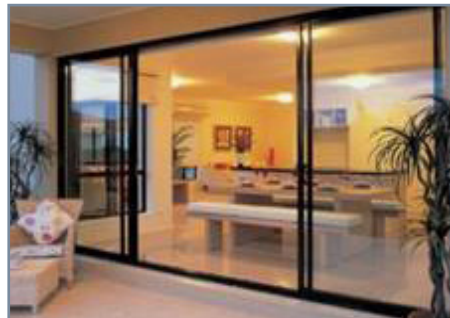
Flooring and Tiling



- Fully tiled internal
- Tiled patio
- Timber skirting & architraves
- Skirting tiles to wet areas
- Splash backs to wet areas
- Shower wall tiled to 2.1m



Doors and Windows



- All internal doors & door furniture
- Powder Coated Aluminium glass sliding windows and Doors (Inc. Fly Screens)

Come Home to Quality!



Address: Shop 34,
5 Faculty Close,
Smithfield QLD 4878
Email: luke@qldkithomes.com.au
Web: qldkithomes.com.au
Phone: (07) 4038 3900
Lic No: QBCC-1201601

External Cladding



Colorbond - Standard

- Economical & affordable
- Available in different profiles
- Wide range of colours
- Hardwearing & durable
- Low-maintenance
- Up to 25 years warranty



Rendered Blueboard - Mid-Range

- Modern, attractive appearance
- Textured or smooth finish
- Wide range of colour choice
- Can be pigmented or painted
- Durable



Weatherboard - High End

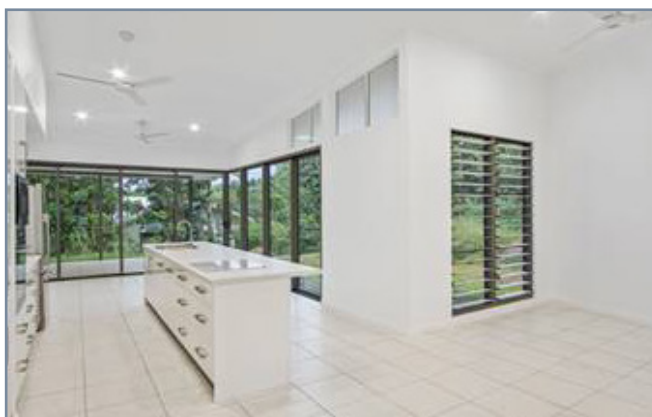
- Available in timber composite or Colorbond
- Available in different profiles and colours to suit any home
- Classic Australian look
- Versatile

Come Home to Quality!



Address: Shop 34,
5 Faculty Close,
Smithfield QLD 4878
Email: luke@qldkithomes.com.au
Web: qldkithomes.com.au
Phone: (07) 4038 3900
Lic No: QBCC-1201601

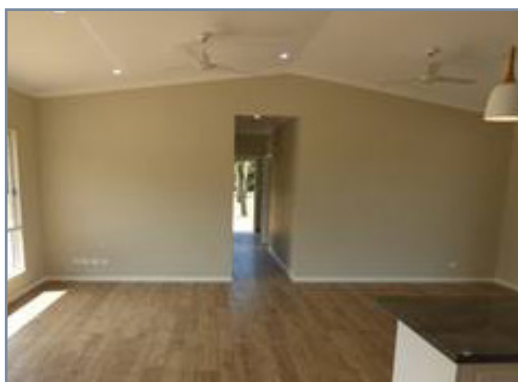
Features



- Raked high ceilings



- In-built wardrobes with sliding doors
& ventilated shelf



- 10mm gyprock walls & ceiling
complete with 90mm cornices



- Gas/Electric instantaneous hot water system
- Rinnai or similar



- FC Sheeting External Ceilings

Optional Extras

- Airconditioning
- Solar Panels/Hotwater System
- Dishwasher
- Timber Floating Floor
- Driveway
- AES Septic System

Ask for our Eco Friendly
Options!