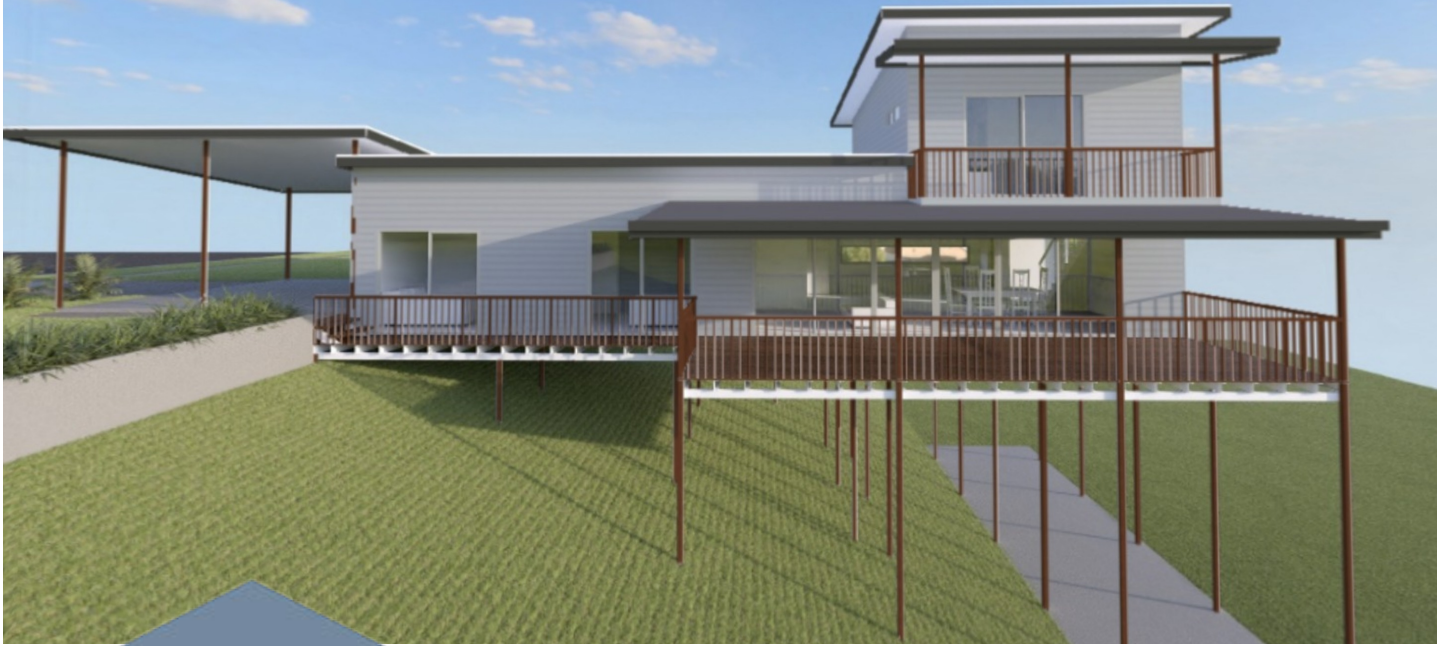


The Seachange




QLD KIT HOMES

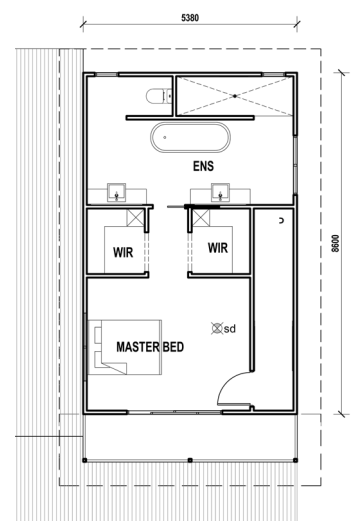
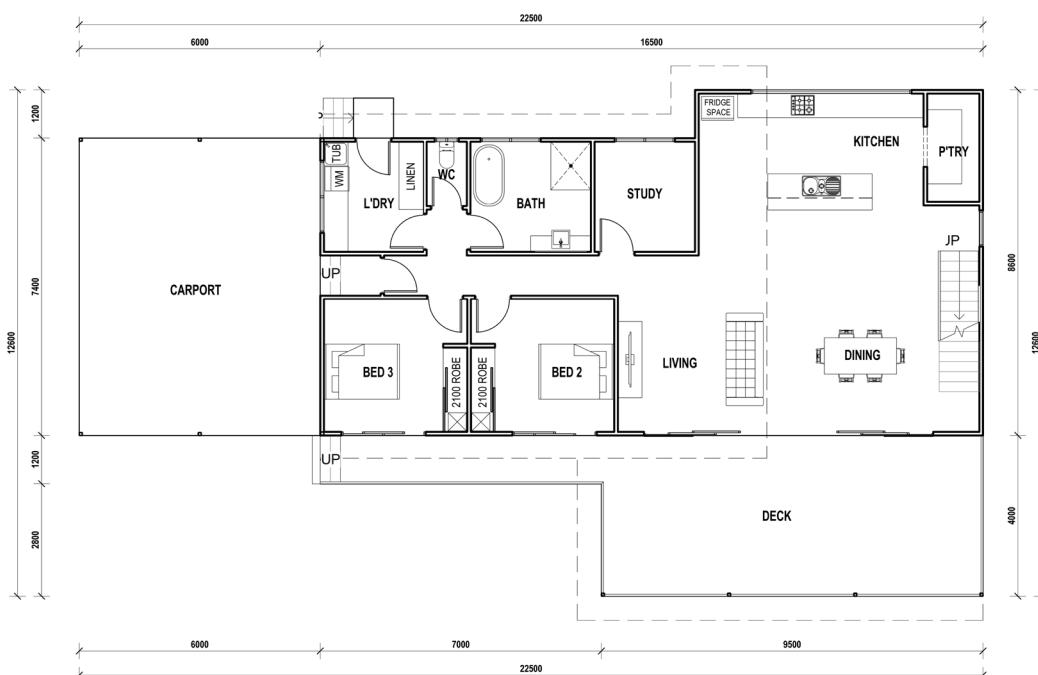
Affordability Without Compromise

The Seachange is a three bed, two bath home featuring a 4m wide patio at the front, with an open plan living area and private master bed suite. This home measures 22.5x12.6m plus 600mm overhangs to all sides of the building. Making this a perfect family home.

3 

2 

272 m² 



34/5 FACULTY CLOSE, SMITHFIELD | PH: (07) 4038 3900 | FAX: (07) 4027 9613
www.qldkithomes.com.au | QBCC: 1117525