

The Retreat

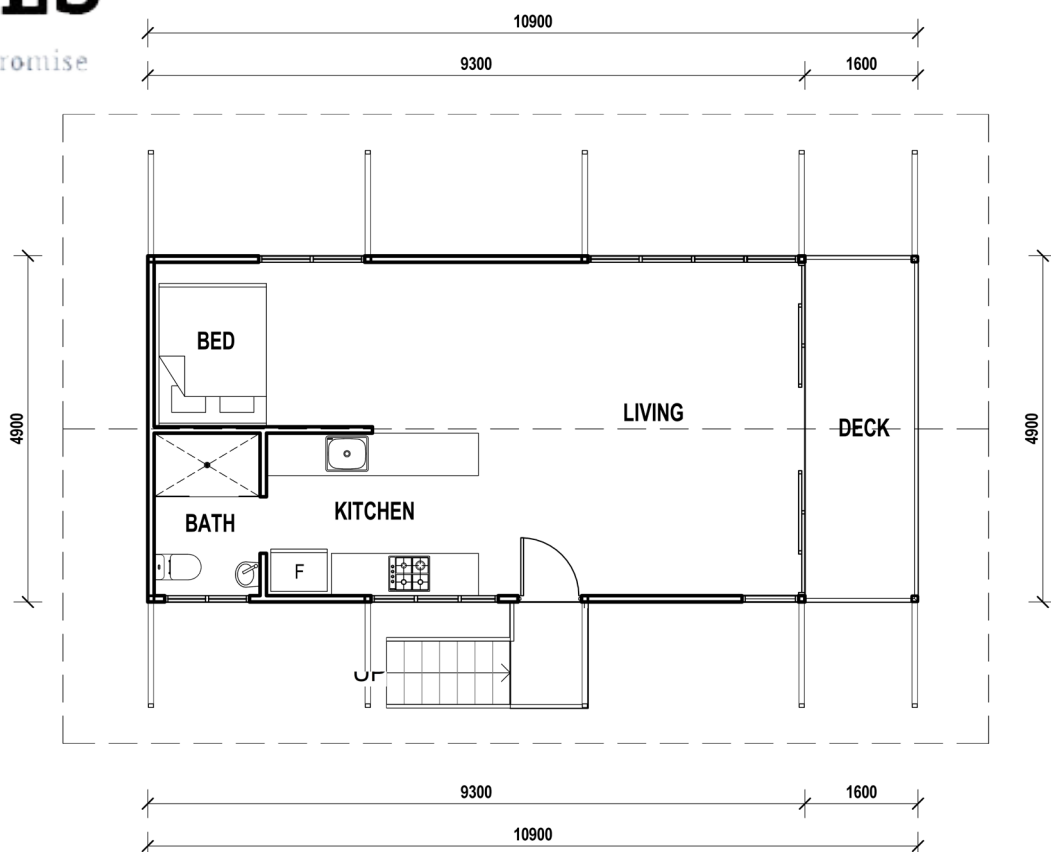


QLD KIT HOMES

Affordability Without Compromise

The Retreat is a one bed, one bath home features a 1.6m wide patio at the front, with an open plan living area. This home measures 10.9x4.9m plus large overhangs to all sides of the building. This house would be matched perfectly with a sloping block.

1 
1 
53 m² 



34/5 FACULTY CLOSE, SMITHFIELD | PH: (07) 4038 3900 | FAX: (07) 4027 9613
www.qldkithomes.com.au | QBCC: 1117525