

# The Coastal Abode




## QLD KIT HOMES

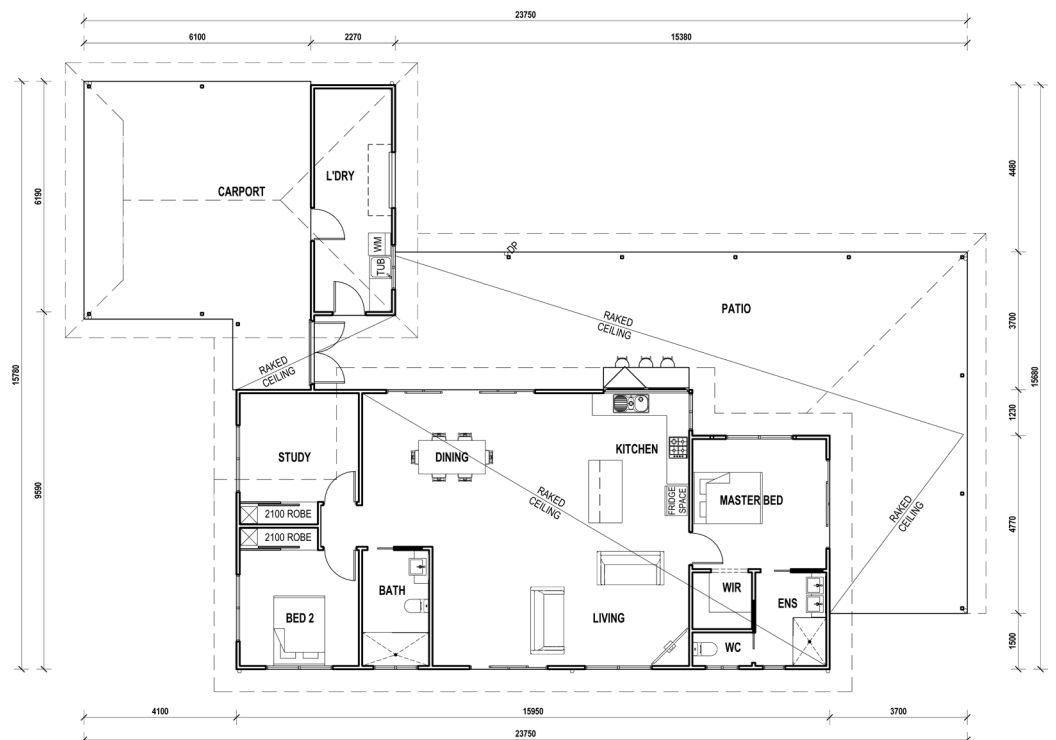
Affordability Without Compromise

The Coastal Abode is a three bed, two bath home features a large wrap around patio at the side and rear, with an open plan living area. This home measures 23.8x15.8m plus 600mm overhangs to all sides of the building. Making this a perfect family home.

3 

2 

256 m<sup>2</sup> 



34/5 FACULTY CLOSE, SMITHFIELD | PH: (07) 4038 3900 | FAX: (07) 4027 9613  
[www.qldkithomes.com.au](http://www.qldkithomes.com.au) | QBCC: 1117525