

The Meadow View



QLD KIT HOMES

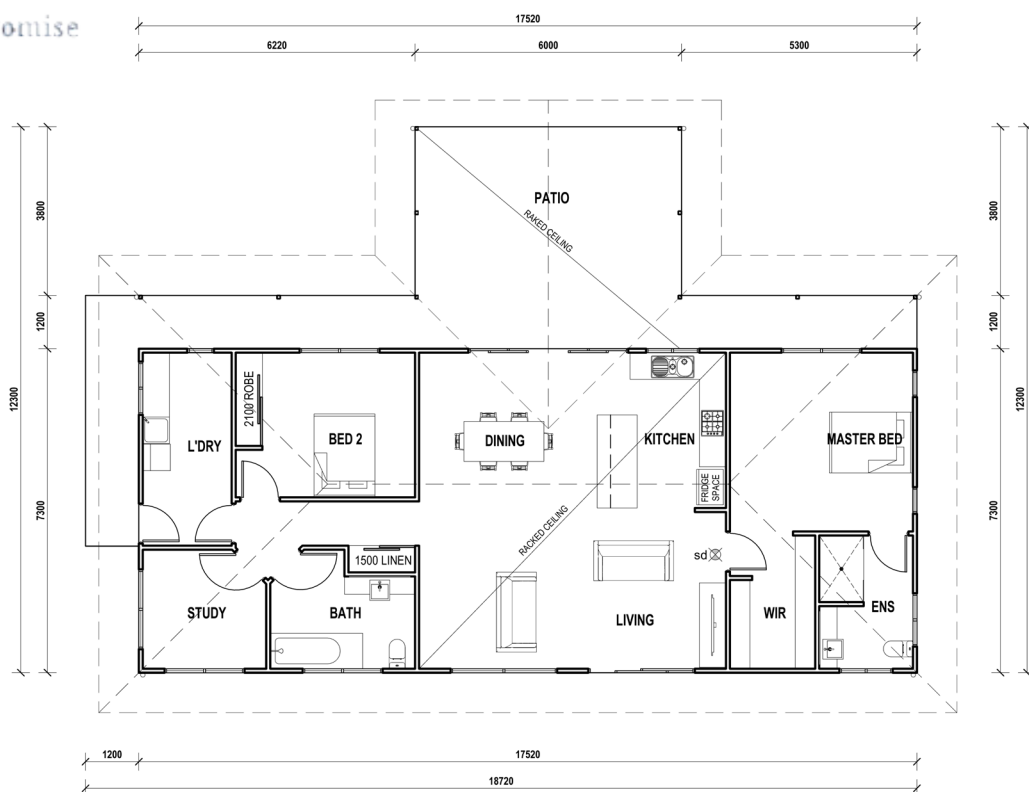
Affordability Without Compromise

The Meadow View is a two bed, two bath home with a study and features a large outdoor entertainment area at the front, with an open plan living area. This home measures 17.5x12.3m plus 900mm overhangs to all sides of the building. Making this a perfect family home.

2 

2 

178 m² 



34/5 FACULTY CLOSE, SMITHFIELD | PH: (07) 4038 3900 | FAX: (07) 4027 9613
www.qldkithomes.com.au | QBCC: 1117525