

The Clubhouse



QLD KIT HOMES

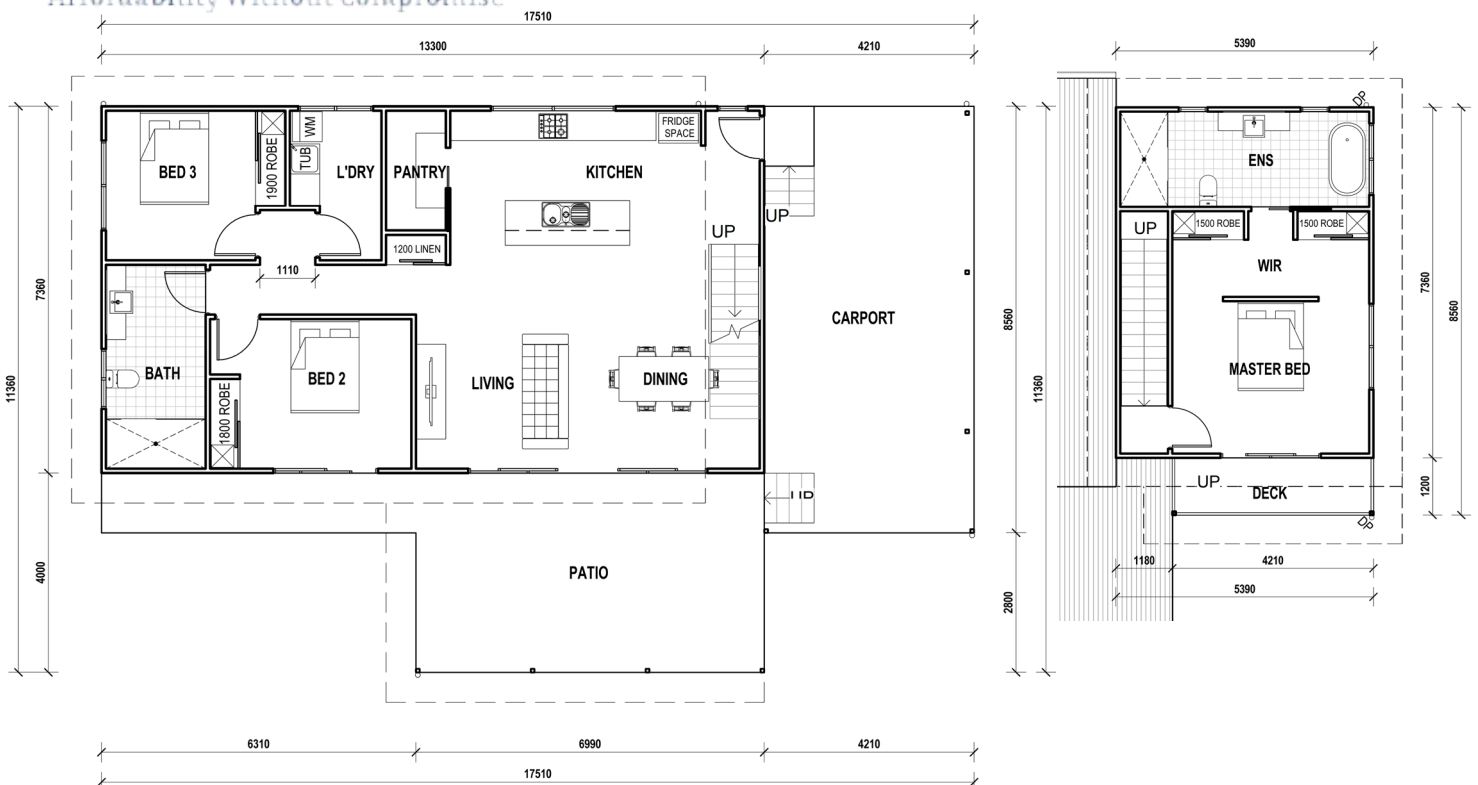
Affordability Without Compromise

The Clubhouse is a three bed, two bath home features a 4m wide patio at the front, with an open plan living area. This home measures 17.5x11.4m plus 600mm overhangs to all sides of the building. Making this a perfect family home.

3 

2 

214 m² 



34/5 FACULTY CLOSE, SMITHFIELD | PH: (07) 4038 3900 | FAX: (07) 4027 9613
www.qldkithomes.com.au | QBCC: 1117525