

Serenity by the Sea

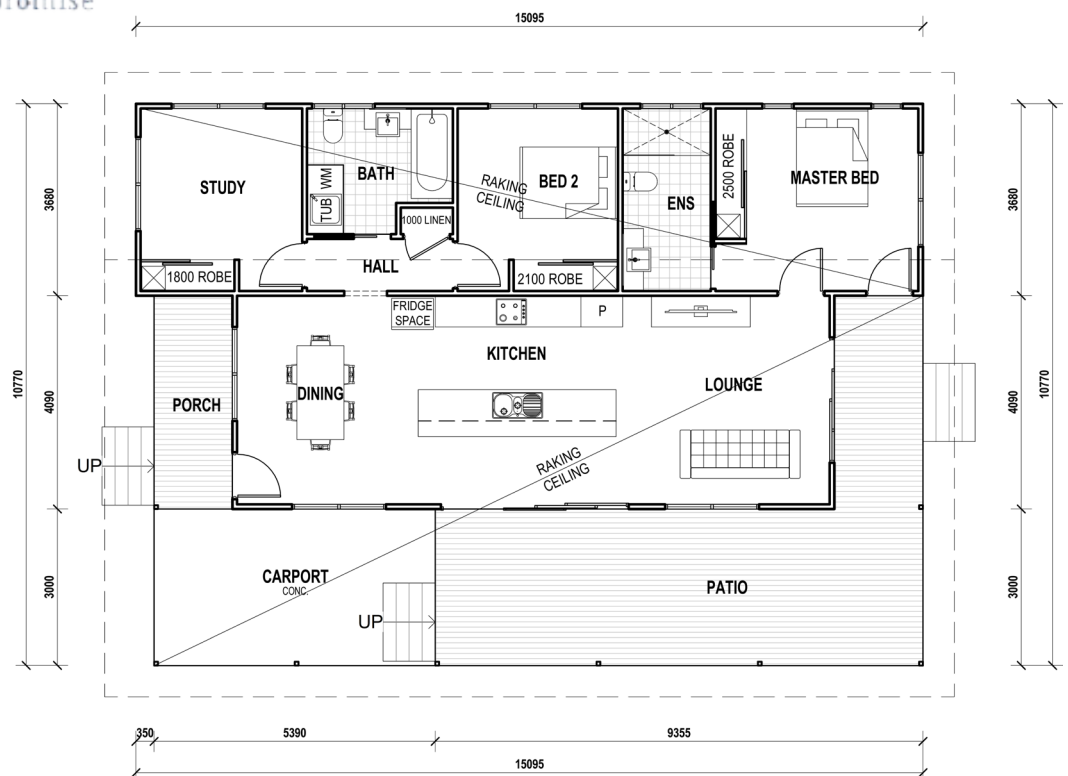


QLD KIT HOMES

Affordability Without Compromise

The Serenity by the Sea is a three bed, two bath home features a 3m wide wrap around patio, with an open plan living area. This home measures 15.1x10.7m plus 600mm overhangs to all sides of the building. Making this a perfect family home or weekender.

3 
2 
160m² 



34/5 FACULTY CLOSE, SMITHFIELD | PH: (07) 4038 3900 | FAX: (07) 4027 9613
www.qldkithomes.com.au | QBCC: 1117525