

# The Twin Oaks

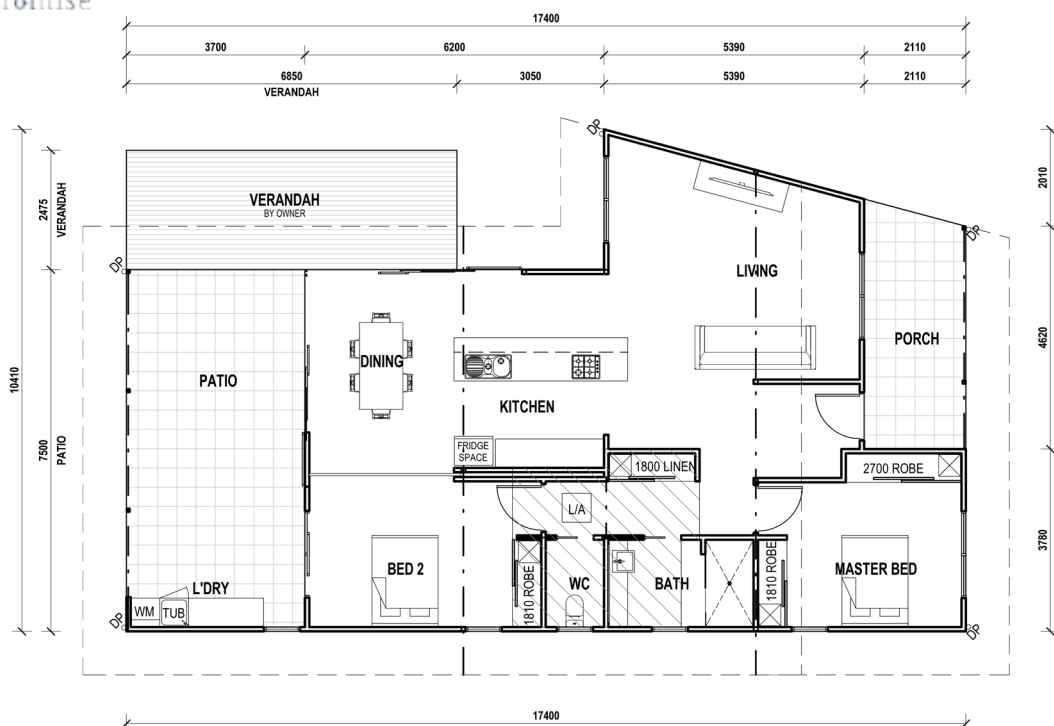


## QLD KIT HOMES

Affordability Without Compromise

The Twin Oaks is a two bed, one bath home features a 2.7m wide patio at the rear, with an open plan living area. This home measures 17.4x10.4 m plus 900mm overhangs to all sides of the building. Making this a perfect retirement home.

2   
1   
162 m<sup>2</sup> 



34/5 FACULTY CLOSE, SMITHFIELD | PH: (07) 4038 3900 | FAX: (07) 4027 9613  
www.qldkithomes.com.au | QBCC: 1117525