

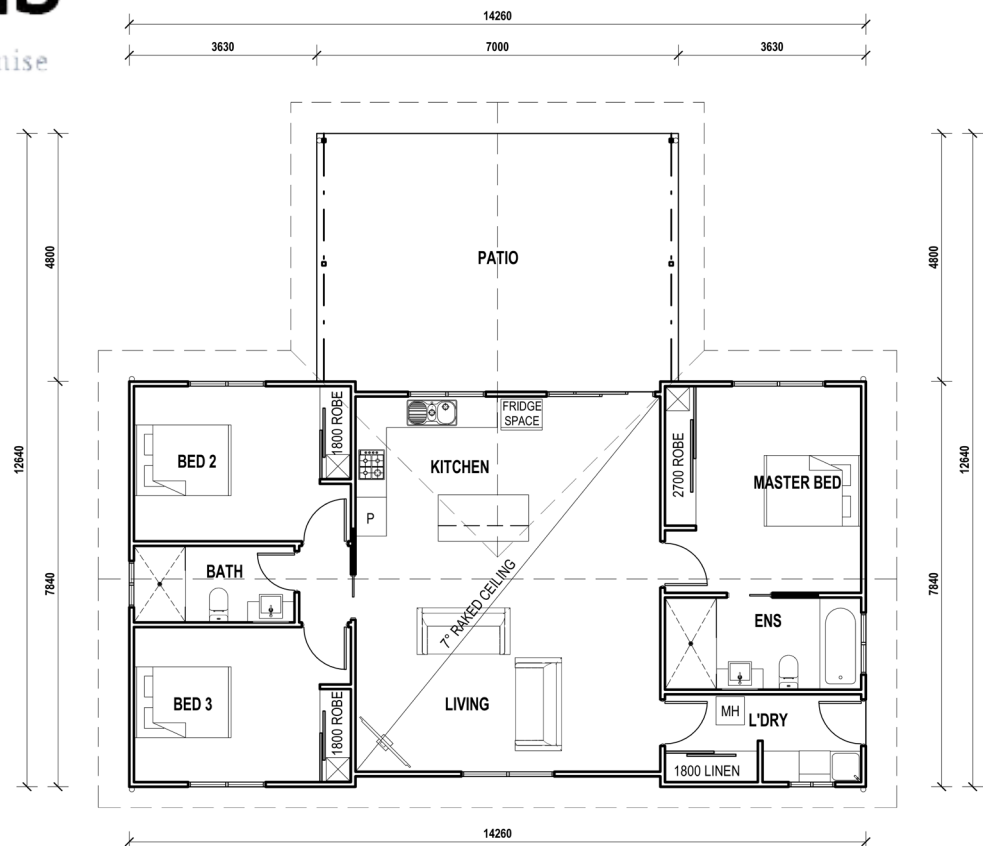
The Greenfield



QLD KIT HOMES

Affordability Without Compromise

The Greenfield is a three bed, two bath home featuring a 7x4.8m patio at the front, with an open plan living area. This home measures 14.2x12.6m plus 600mm overhangs to all sides of the building. Making this a perfect first or family home.



3

2

144 m²

34/5 FACULTY CLOSE, SMITHFIELD | PH: (07) 4038 3900 | FAX: (07) 4027 9613
www.qldkithomes.com.au | QBCC: 1117525