

# The Bush Retreat

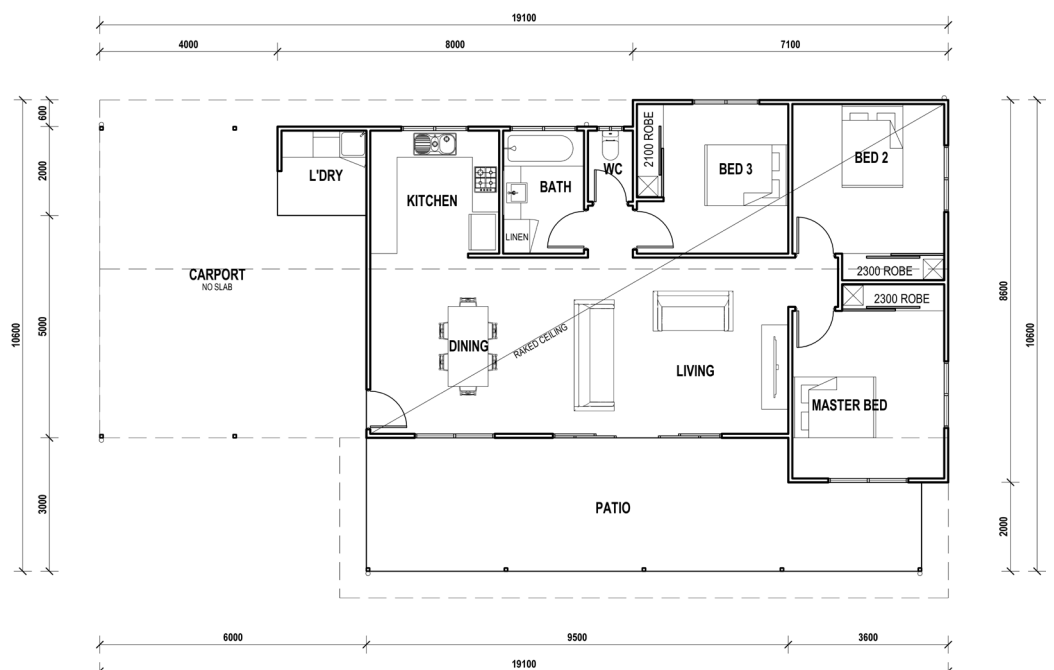


## QLD KIT HOMES

Affordability Without Compromise

The Bush Retreat is a three bed, one bath home featuring a 3m wide patio at the front, with an open plan living area. This home measures 19.1x10.6m plus 600mm overhangs. Making this a perfect first home.

3   
1   
176 m<sup>2</sup> 



34/5 FACULTY CLOSE, SMITHFIELD | PH: (07) 4038 3900 | FAX: (07) 4027 9613  
www.qldkithomes.com.au | QBCC: 1117525