

# The Seacrest




# QLD KIT HOMES

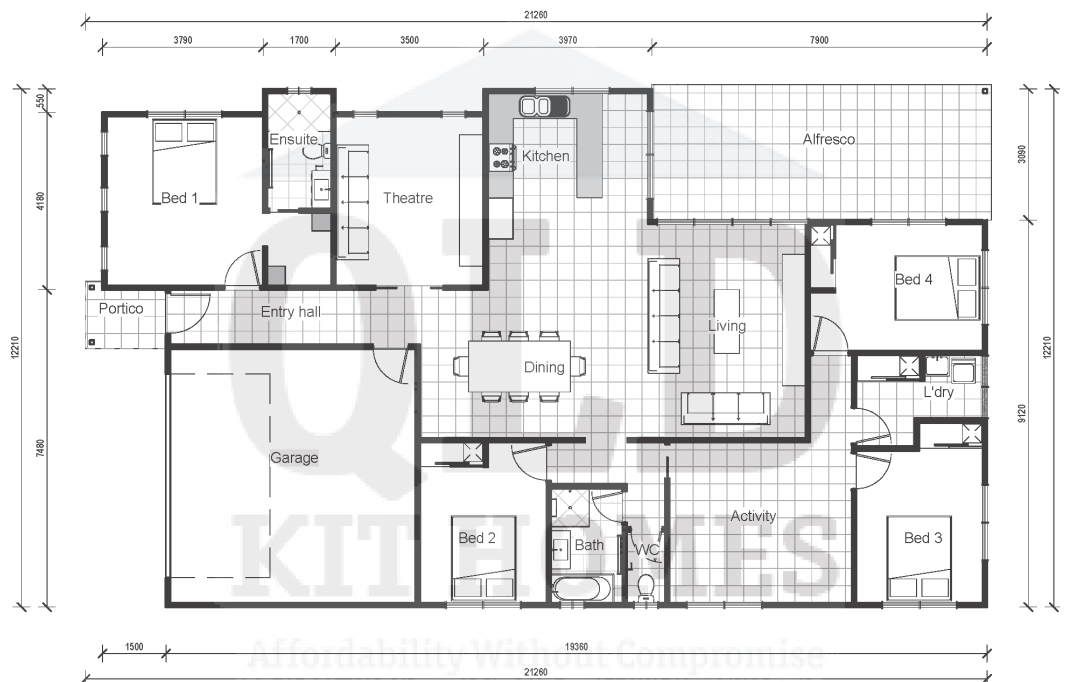
Affordability Without Compromise

The Seacrest is a four bed, two bath home, featuring a 3m wide patio at the rear, with an open plan living area, double carport, theatre and activity room. This home measures 21.2m X 12.2m plus 600 eaves to all sides of the building, making this a perfect family home with room to expand.

4 

2 

234 m<sup>2</sup> 



34/5 FACULTY CLOSE, SMITHFIELD | PH: (07) 4038 3900 | FAX: (07) 4027 9613  
www.qldkithomes.com.au | QBCC: 1117525