

The Deja Views 160

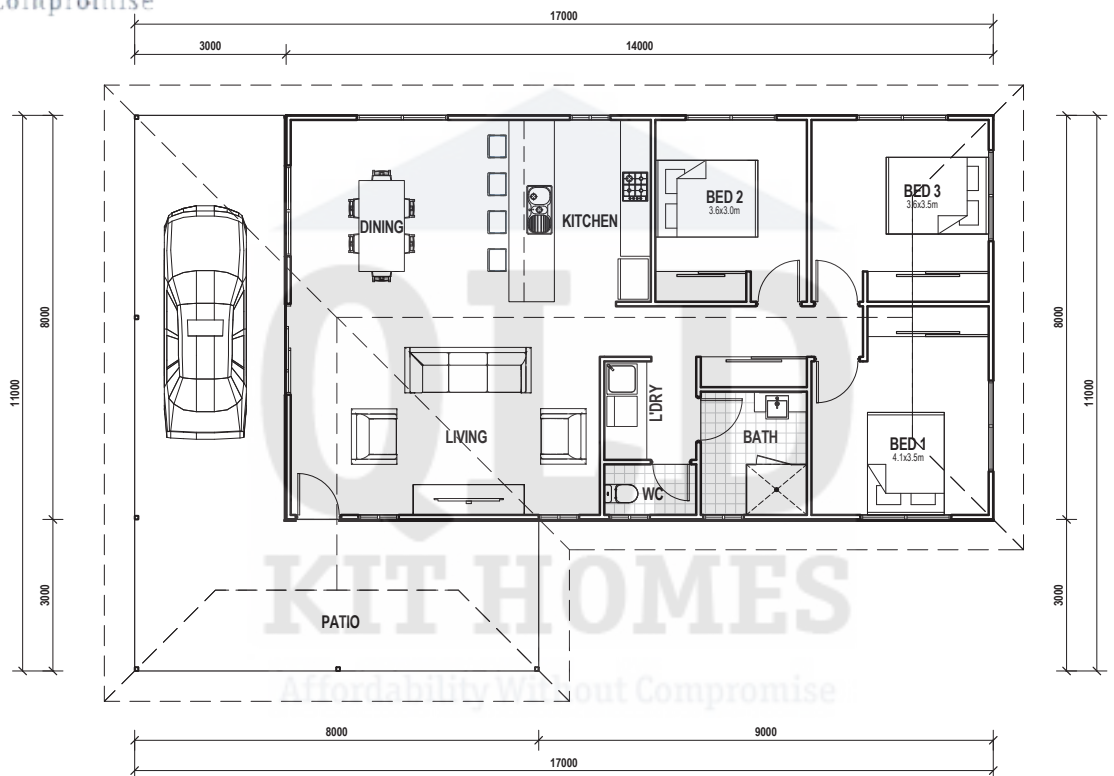


QLD KIT HOMES

Affordability Without Compromise

The Deja Views is a three bed, one bath home which features a 3m wide wrap around patio, perfect for entertaining or under cover parking, inside boasts a spacious open plan living area. All up the Deja Views measures 17x11m with 600mm overhangs to all sides of the building.

3 
1 
160 m² 



34/5 FACULTY CLOSE, SMITHFIELD | PH: (07) 4038 3900 | FAX: (07) 4027 9613
www.qldkithomes.com.au | QBCC: 1117525